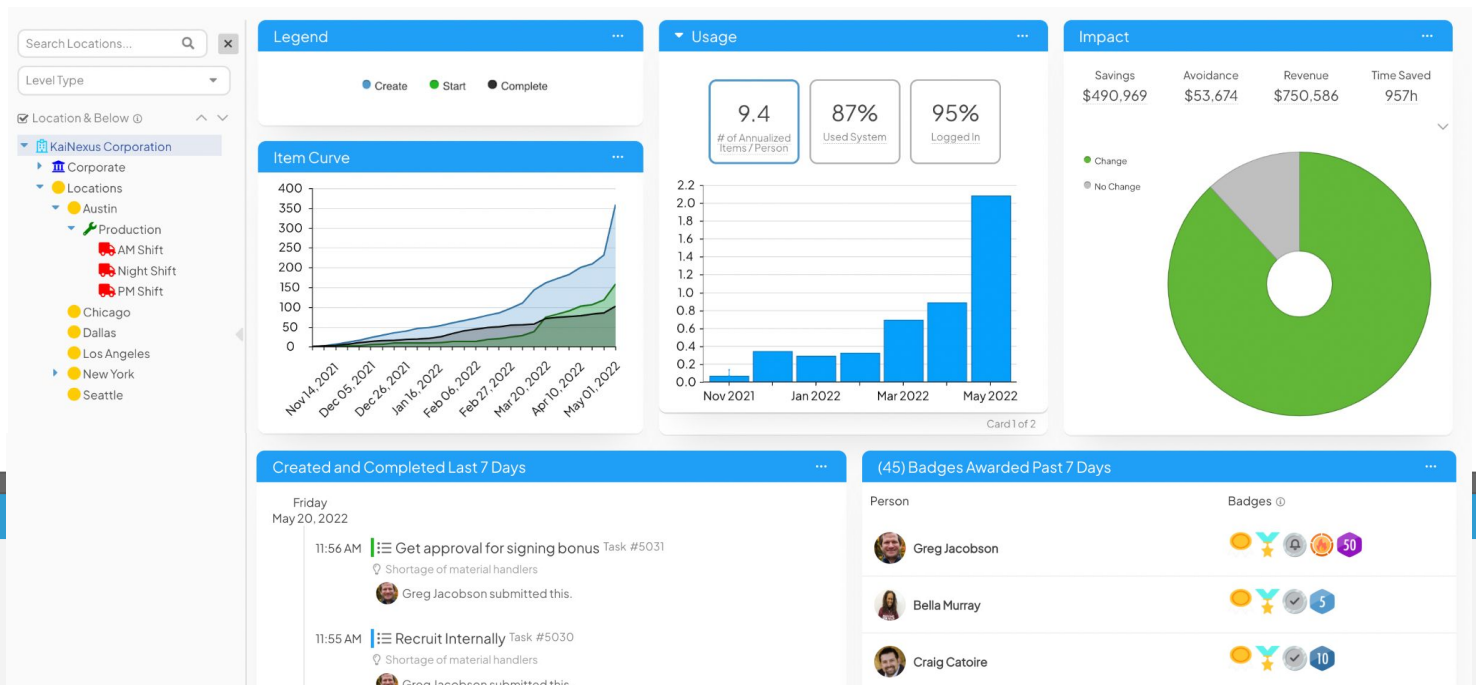


Anatomy of Executive Dashboards



Executives play a key role in driving your improvement culture. Optimizing KaiNexus for their needs ensures that they can participate efficiently and effectively. Executives should build the habit of visiting and working through this board at least weekly.

Give them visibility into the health of your improvement culture:

The Item Curve Report shows trends in activity, giving executives an instant understanding of the health of your improvement culture.

The Engagement Summary Report shows executives vital engagement data so they can easily identify where their support is most needed.

The Impact Summary Report makes it easy for executives to tie improvement to their bottom line.

All of these reports can be filtered down to the team level using the Location Picker, so executives can easily identify which team is excelling and which needs help.

Executives can exert a powerful influence over an improvement culture by simply engaging with managers and frontline employees in KaiNexus.

The Activity Feed Card should be customized to show items related to each executive's interests. By putting this on their personal dashboard, executives can click through to engage on items quickly and easily.

The Badge Report Card shows who has earned which badges, making it easy for executives to identify high performers and acknowledge their efforts in real-time.